

2019 COMMUNITY INVESTMENT REPORT

Partial report as of July 1, 2019

Jewish Federation of St. Louis' mission is to mobilize the Jewish community and its human and financial resources to preserve and enhance Jewish life in St. Louis, Israel, and around the world. In 2017, our new Strategic Plan outlined a fundamental change of process to bring greater focus to our work and enhance our impact. The plan established our four Core Commitments.

- Expand and strengthen an **engaged, vibrant, and flourishing** St. Louis Jewish community  **CC1**
- Secure the **well-being and safety** of individuals within the Jewish community  **CC2**
- Strengthen our **connection to Israel** and the Jewish people worldwide  **CC3**
- Develop the **financial & human resources and infrastructure** needed by our community  **CC4**

The Board of Directors set **priorities** within each Core Commitment, which guide Federation's needs assessments, plan development, community investments, and evaluations.

This report outlines 2019 Community Investments by Core Commitment and priority area as of July 1, 2019.

The investment review process is a partnership between the Community Impact lay leaders and professionals. This new model has been developed and implemented under the leadership of:

Transition Committee Chair, **Greg Yawitz**

Board Chair, **Gerry Greiman**

Transition Committee members:

Dugie Baron

Shira Berkowitz

Dan Friedman

Burt Garland

Randy Green

JoAnne Levy

Emily Stein MacDonald

Craig Rosenthal

Sue Schlichter

Sherry Shuman

Les Serman

Tim Stern

Rob Wasserman

The Community Impact professional team includes:



Mindee Fredman
Vice President,
Community Impact



Emily Bornstein
Director of Community
Investment & Evaluation



Nikki Weinstein
Director of Community
Assessment & Planning



Lori Kabrun-Berry
Community Impact
Senior Associate



Nava Kantor
Community Impact
Associate



Colleen Doyle
Community Impact
Resource Assistant

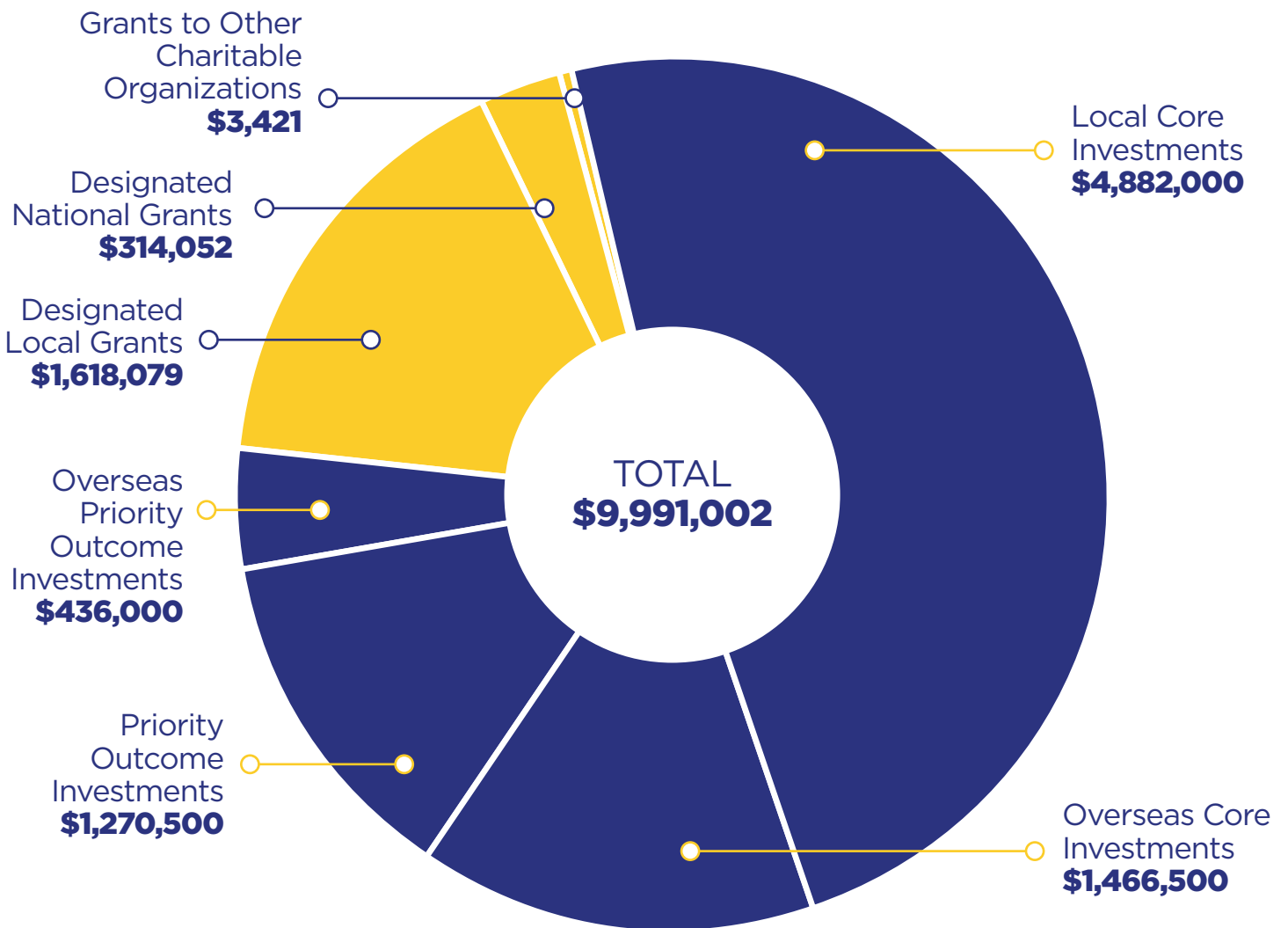


ALL COMMUNITY INVESTMENTS

This chart outlines all investments approved between January 1, 2019 and July 1, 2019 including investments in organizations outside the Jewish Federation of St. Louis and investments in internal initiatives. To learn more about the specific investments and the different sources of funding, go to JFedSTL.org/What-We-Fund.

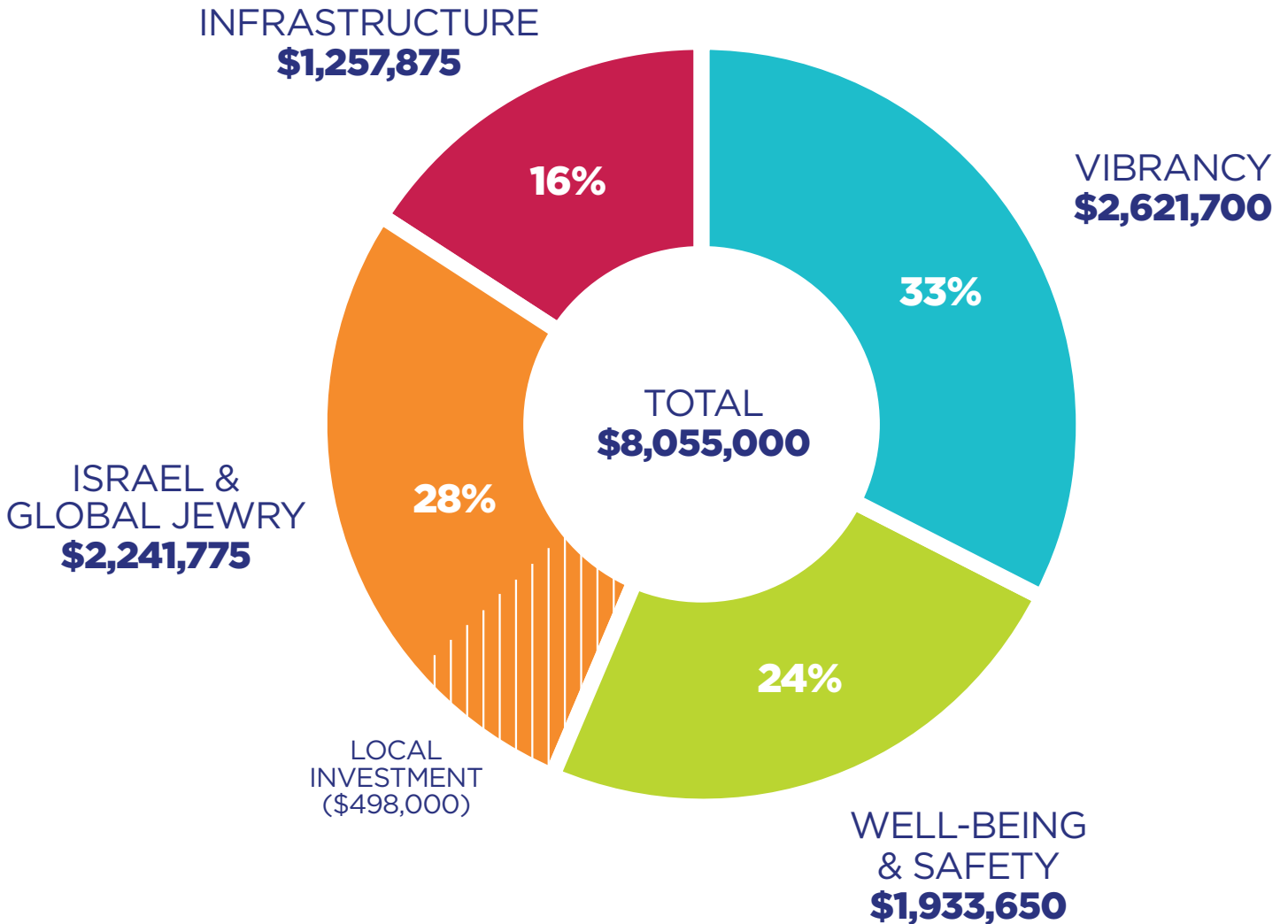
Supporting Foundations, Restricted Endowments, and Donor Advised Fund Investments

Annual Campaign and Unrestricted Endowment Investments



CORE AND PRIORITY OUTCOME INVESTMENTS BY CORE COMMITMENT

(AS OF JULY 2019)



Core Investments are significant investments in organizations whose core work is aligned with Federation’s Core Commitments and priorities. Core Investments are focused on the high-level outcomes of an organization’s work, or aim they wish to see, and are not focused on specific programs. Each Core Investment is also meant to support the organization’s infrastructure and capacity.

Priority Outcome Investments (POIs) are restricted investments made for initiatives and programs that aim to achieve outcomes within Federation’s identified priority areas.

CORE INVESTMENTS

Below you can find the organizations receiving a Core Investment and in which Core Commitments our investment in their work aligns.

ORGANIZATION - PROGRAM	TOTAL INVESTMENT	VIBRANCY (CC1)	WELL-BEING AND SAFETY (CC2)	ISRAEL AND GLOBAL JEWRY (CC3)	INFRASTRUCTURE (CC4)
Covenant Place Foundation*	\$ 83,000		X		X
Day School Funding**	500,000	X			X
Hillel at Mizzou	60,000	X		X	X
Hillel at Washington University in St. Louis	107,000	X		X	X
Jewish Agency for Israel	720,000			X	X
Jewish Community Center*	1,040,000	X	X	X	X
Jewish Community Relations Council	285,000	X	X	X	X
Jewish Family & Children's Service*	759,000		X		X
Jewish Federation of St. Louis Center for Jewish Learning	560,000	X		X	X
Jewish Federation of St. Louis Community Engagement*	886,000	X		X	X
Jewish Federation of St. Louis Community Security*	105,000		X		X
Jewish Federation of St. Louis Holocaust Museum & Learning Center*	220,000	X	X		X
Jewish Federation of St. Louis St. Louis NORC*	200,000		X		X
Joint Distribution Committee*	505,000			X	X
The St. Louis Jewish Light***	77,000	X			X
Yokneam Megiddo Partnership*	241,500			X	X
TOTAL:	\$6,348,500				

* These investments are multi-year commitments, contingent upon the organization achieving outcomes and Federation's Annual Campaign.

** The Day School funding is not yet committed. \$500,000 is an estimate of the investment to be committed in the fall. The estimate is based on student enrollment projections from the Day Schools.

*** The investment in the Light is the second year of a three-year commitment to the Light, as part of a larger \$1 million investment in partnership with the Staenberg Family Foundation and an anonymous donor.

The following pages break down Core and Priority Outcomes Investments by Core Commitment and priority area.

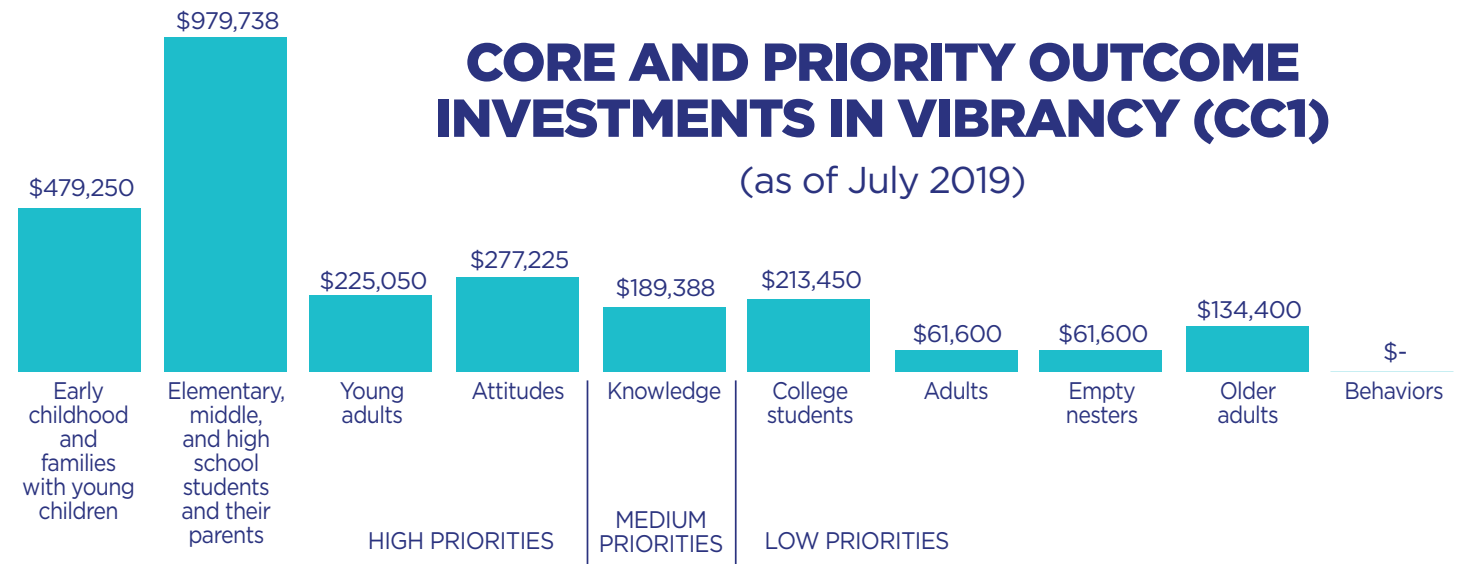
Jewish Federation of St. Louis makes investments in our community partners to support their efforts to achieve outcomes. This is the first time, in an ongoing learning process, in which Federation has aligned community investments with our Core Commitments and priority areas since the approval of the **2017 Strategic Plan**.

Core Investments are determined based on the organization's work and the outcomes in which we invest in them to achieve.

All Priority Outcome Investments are aligned with one primary priority area.

CORE AND PRIORITY OUTCOME INVESTMENTS IN VIBRANCY (CC1)

(as of July 2019)



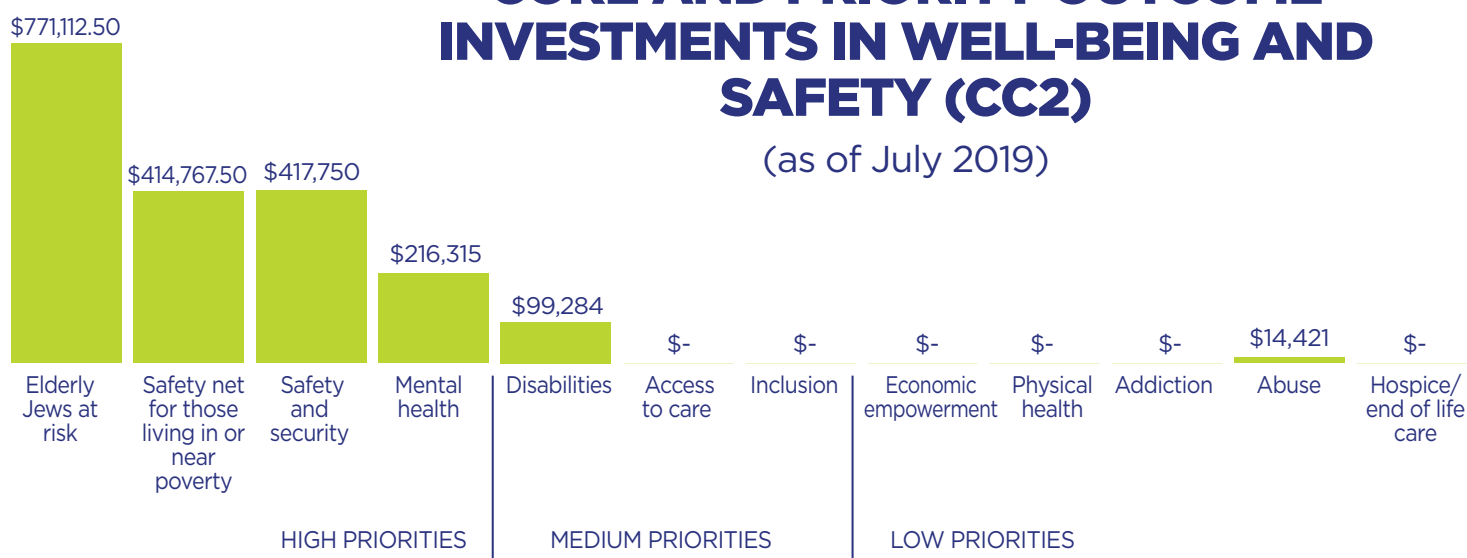
Investment Type	Organization - Program	Total Investment	Total CC1 Investment	CC1										
				High			Medium			Low				
				Early childhood and families with young children	Elementary, middle, and high school students and their parents	Young adults	Attitudes	Knowledge	College students	Adults	Empty nesters	Older adults	Behaviors	
Core	Hillel at Mizou	\$60,000	\$51,000						\$51,000					
Core	Hillel at Washington University	\$107,000	\$90,950						\$90,950					
Core	Jewish Community Center*	\$1,040,000	\$728,000	\$145,600	\$364,000		\$145,600					\$72,800		
Core	Jewish Community Relations Council	\$285,000	\$99,750		\$24,938		\$49,875	\$24,938						
Core	Jewish Federation of St. Louis Center for Jewish Learning	\$560,000	\$308,000					\$123,200		\$61,600	\$61,600	\$61,600		
Core	Jewish Federation of St. Louis Community Engagement*	\$886,000	\$443,000	\$243,650	\$44,300	\$155,050								
Core	Jewish Federation of St. Louis HMLC*	\$220,000	\$22,000					\$22,000						
Core	The St. Louis Jewish Light*	\$77,000	\$38,500				\$19,250	\$19,250						
DSFF	Day School Funding**	\$500,000	\$500,000		\$500,000									
POI	BBYO - BBYO St. Louis Council	\$8,000	\$8,000		\$8,000									
POI	Chabad on Campus - JGrads	\$45,000	\$45,000			\$45,000								
POI	Chabad on Campus - The Network	\$24,000	\$24,000						\$24,000					
POI	Early Childhood Directors Council	\$65,000	\$65,000	\$65,000										
POI	Hillel at Mizou - Israel Engagement and Jewish Identity Worker	\$10,000	\$10,000						\$10,000					
POI	Hillel at Washington University Jewish Engagement Initiative strategic program grant	\$37,500	\$37,500						\$37,500					
POI	Jewish Community Center Family Center's Jewish Family Engagement Initiative	\$10,000	\$10,000	\$10,000										
POI	Jewish Community Center Sababa: Jewish Arts & Culture Festival*	\$62,500	\$62,500				\$62,500							
POI	Jewish Student Union	\$38,500	\$38,500		\$38,500									
POI	Kol Rinah, We Stories, ADL and PJ Library - Discovering Differences	\$15,000	\$15,000	\$15,000										
POI	Next Dor STL	\$10,000	\$10,000			\$10,000								
POI	St. Louis Kollel - Torah & Turf	\$15,000	\$15,000			\$15,000								

*These investments are multi-year commitments, contingent upon the organization achieving outcomes and Federation's Annual Campaign.

**The Day School funding is not yet committed. \$500,000 is an estimate of the investment to be committed in the fall. The estimate is based on student enrollment projections from the Day Schools.

CORE AND PRIORITY OUTCOME INVESTMENTS IN WELL-BEING AND SAFETY (CC2)

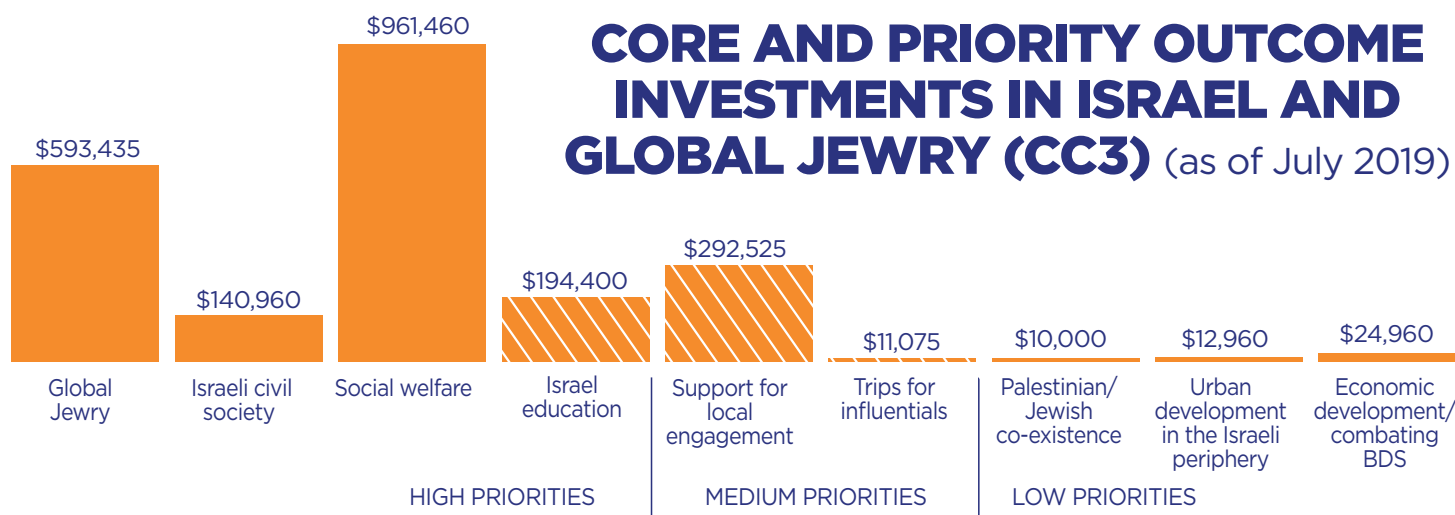
(as of July 2019)



Investment Type	Organization - Program	Total Investment	CC2												
			Total CC2 Investment	High				Medium			Low				
				Elderly Jews at risk	Safety net for those living in or near poverty	Safety and security	Mental health	Disabilities	Access to care	Inclusion	Economic empowerment	Physical health	Addiction	Abuse	Hospice/end of life care
Core	Covenant Place Foundation*	\$83,000	\$78,850	\$78,850											
Core	Jewish Community Center*	\$1,040,000	\$208,000	\$104,000	\$62,400			\$41,600							
Core	Jewish Community Relations Council	\$285,000	\$114,000			\$114,000									
Core	Jewish Family & Children's Service*	\$759,000	\$721,050	\$180,263	\$252,368		\$216,315	\$57,684						\$14,421	
Core	Jewish Federation of St. Louis - Community Security*	\$105,000	\$99,750			\$99,750									
Core	Jewish Federation of St. Louis - HMLC*	\$220,000	\$187,000			\$187,000									
Core	Jewish Federation of St. Louis - St. Louis NORC	\$200,000	\$190,000	\$190,000											
POI	ADL Heartland	\$17,000	\$17,000			\$17,000									
POI	Covenant Place - Social Nutrition Program	\$80,000	\$80,000	\$80,000											
POI	Crown Center - Russian Language Case Manager*	\$5,000	\$5,000	\$5,000											
POI	Crown Center - Social Nutrition	\$63,000	\$63,000	\$63,000											
POI	Jewish Community Center - Social Nutrition	\$70,000	\$70,000	\$70,000											
POI	MERS/Goodwill - Jewish Community Employment Services	\$55,000	\$55,000		\$55,000										
POI	Rabbinic Chesed Fund	\$45,000	\$45,000		\$45,000										

*These investments are multi-year commitments, contingent upon the organization achieving outcomes and on Federation's Annual Campaign.

CORE AND PRIORITY OUTCOME INVESTMENTS IN ISRAEL AND GLOBAL JEWRY (CC3) (as of July 2019)



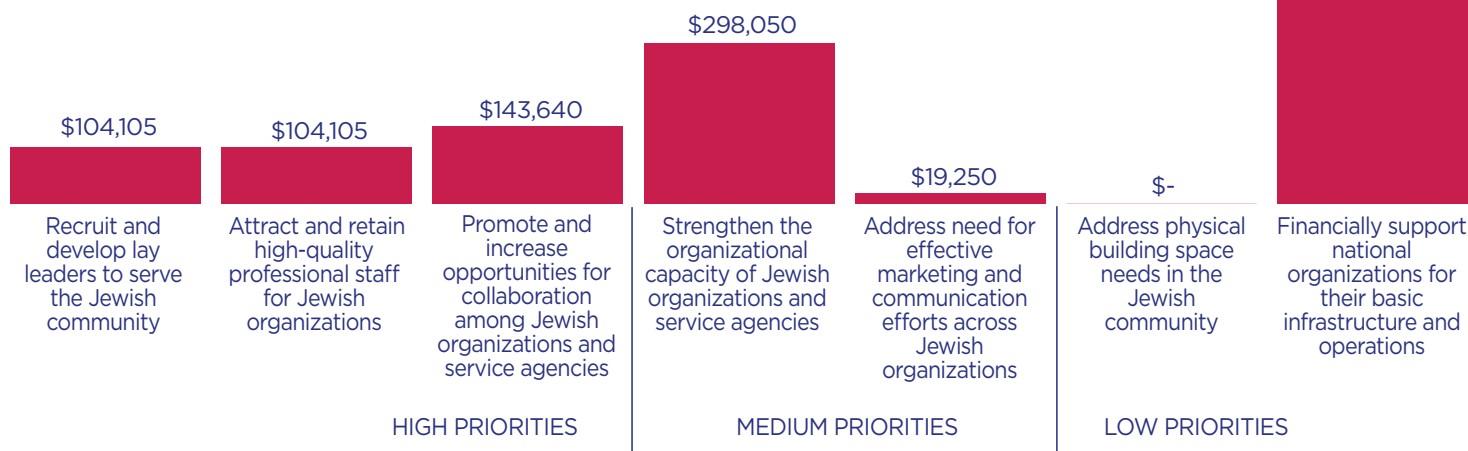
Local Investments

Investment Type	Organization - Program	Total Investment	Total CC3 Investment	CC3										
				High			Medium			Low				
				Global Jewry	Israeli civil society	Social welfare	Israel education	Support for local engagement	Trips for influentials	Palestinian/Jewish co-existence	Urban development in the Israeli periphery	Economic development/combating BDS		
Core	Hillel at Mizou	\$60,000	\$6,000				\$6,000							
Core	Hillel at Washington University	\$107,000	\$10,700				\$10,700							
Core	Jewish Agency for Israel	\$720,000	\$648,000	\$142,560	\$12,960	\$466,560						\$12,960	\$12,960	
Core	Jewish Community Center*	\$1,040,000	\$52,000				\$26,000	\$26,000						
Core	Jewish Community Relations Council	\$285,000	\$57,000				\$57,000							
Core	Jewish Federation of St. Louis - Center for Jewish Learning	\$560,000	\$100,800				\$50,400	\$50,400						
Core	Jewish Federation of St. Louis - Community Engagement*	\$886,000	\$221,500				\$44,300	\$166,125	\$11,075					
Core	Joint Distribution Committee*	\$505,000	\$454,500	\$340,875		\$113,625								
Core	YM** - Yokneam Megiddo Partnership*	\$241,500	\$205,275			\$205,275								
POI	A Safe Home and Rehabilitation Program for Women and Children Escaping Domestic Violence*	\$5,000	\$5,000			\$5,000								
POI	Birthright Israel	\$50,000	\$50,000					\$50,000						
POI	Center for Women's Justice*	\$20,000	\$20,000		\$20,000									
POI	Economic Empowerment for Women - A Business of One's Own	\$15,000	\$15,000			\$15,000								
POI	Elifelet - Community Guidance and Counselling Center for the Asylum Seekers Community	\$5,000	\$5,000			\$5,000								
POI	Hand In Hand - Jaffa School Growth and Expansion*	\$12,000	\$12,000		\$12,000									
POI	Israel Trauma Coalition - Creating Resilient Teams in the Bedouin Community	\$10,000	\$10,000			\$10,000								
POI	Israeli Arab Interagency Task Force	\$1,000	\$1,000		\$1,000									
POI	ITIM - Legal & Public Policy Centers*	\$20,000	\$20,000		\$20,000									
POI	Jerusalem College of Technology - Haredi Job Placement*	\$10,000	\$10,000			\$10,000								
POI	Jerusalem Open House for Pride & Tolerance - Education for Tolerance	\$10,000	\$10,000			\$10,000								
POI	Jewish Agency for Israel - Fund for Victims of Terror*	\$15,000	\$15,000			\$15,000								
POI	Jewish Agency for Israel - Summer Camps in Riga and Kazakhstan	\$60,000	\$60,000	\$60,000										
POI	Jewish Federations of North America - Israel Action Network	\$12,000	\$12,000										\$12,000	
POI	Jewish Federations of North America - The Israel Religious Expression Platform (IREP)	\$5,000	\$5,000		\$5,000									
POI	Joint Distribution Committee - Elderly Welfare Relief in the Former Soviet Union	\$50,000	\$50,000	\$50,000										
POI	Joint Distribution Committee - Inter-Agency Task Force on Israeli-Arab Issues*	\$1,000	\$1,000		\$1,000									
POI	Kol Israel Haverim - Alliance - Cracking the Glass Ceiling	\$20,000	\$20,000			\$20,000								
POI	O School - Interfaith Arab Jewish Model United Nations for Youth	\$15,000	\$15,000		\$15,000									
POI	Road to Recovery*	\$10,000	\$10,000								\$10,000			
POI	Shaharit - 120 Program For Rising Multicultural National Political Leadership*	\$25,000	\$25,000		\$25,000									
POI	Shores Institution for Socioeconomic Research*	\$20,000	\$20,000			\$20,000								
POI	YM** - Association for the Aged - Integrating Active Society	\$10,000	\$10,000			\$10,000								
POI	YM** - Gil Or - Supportive Community	\$10,000	\$10,000			\$10,000								
POI	YM** - Israel Movement for Reform and Progressive Judaism - Maggid HaRuach Initiative for Jewish Renewal in Meggido	\$30,000	\$30,000		\$30,000									
POI	YM** - Jewish Agency for Israel - Youth Futures	\$28,000	\$28,000			\$28,000								
POI	YM** - Leket Israel - Yokneam Food Support Program	\$18,000	\$18,000			\$18,000								

*These investments are multi-year commitments, contingent upon the organization achieving outcomes and on Federation's Annual Campaign.
 **YM signifies investments in our partnership with Yokneam and Megiddo.

CORE AND PRIORITY OUTCOME INVESTMENTS IN INFRASTRUCTURE (CC4) (as of July 2019)

\$588,725



Investment Type	Organization - Program	Total Investment	CC4							
			Total CC4 Investment	High		Medium		Low		
				Recruit and develop lay leaders to serve the Jewish community	Attract and retain high-quality professional staff for Jewish organizations	Promote and increase opportunities for collaboration among Jewish organizations and service agencies	Strengthen the organizational capacity of Jewish organizations and service agencies	Address need for effective marketing and communication efforts across Jewish organizations	Address physical building space needs in the Jewish community	Financially support national organizations for their basic infrastructure and operations
Core	Covenant Place Foundation*	\$83,000	\$4,150				\$4,150			
Core	Hillel at Mizzou	\$60,000	\$3,000				\$3,000			
Core	Hillel at Washington University	\$107,000	\$5,350				\$5,350			
Core	Jewish Agency for Israel	\$720,000	\$72,000							\$72,000
Core	Jewish Community Center*	\$1,040,000	\$52,000				\$52,000			
Core	Jewish Community Relations Council	\$285,000	\$14,250				\$14,250			
Core	Jewish Family & Children's Service*	\$759,000	\$37,950				\$37,950			
Core	Jewish Federation of St. Louis - Center for Jewish Learning	\$560,000	\$151,200			\$143,640	\$7,560			
Core	Jewish Federation of St. Louis - Community Engagement*	\$886,000	\$221,500	\$104,105	\$104,105		\$13,290			
Core	Jewish Federation of St. Louis - Community Security*	\$105,000	\$5,250				\$5,250			
Core	Jewish Federation of St. Louis - HMLC*	\$220,000	\$11,000				\$11,000			
Core	Jewish Federation of St. Louis - St. Louis NORC*	\$200,000	\$10,000				\$10,000			
Core	Joint Distribution Committee*	\$505,000	\$50,500							\$50,500
Core	The Jewish Light*	\$77,000	\$38,500				\$19,250	\$19,250		
Core	Yokneam Megiddo Partnership*	\$241,500	\$36,225							\$36,225
POI	70 Faces Media	\$2,500	\$2,500							\$2,500
POI	American Jewish Committee-NY	\$19,000	\$19,000							\$19,000
POI	Hillel International	\$24,000	\$24,000							\$24,000
POI	Jewish Community Centers Association*	\$19,000	\$19,000							\$19,000
POI	Jewish Council for Public Affairs	\$9,500	\$9,500							\$9,500
POI	Jewish Federation of St. Louis - P&A Discretionary Fund	\$50,000	\$50,000				\$50,000			
POI	Jewish Federation of St. Louis - President & CEO Discretionary Fund	\$25,000	\$25,000				\$25,000			
POI	Jewish Federation of St. Louis - Research Fund	\$40,000	\$40,000				\$40,000			
POI	Jewish Federations of North America	\$352,000	\$352,000							\$352,000
POI	JPRO Network	\$1,500	\$1,500							\$1,500
POI	Moishe House	\$2,500	\$2,500							\$2,500

*These investments are multi-year commitments, contingent upon the organization achieving outcomes and on Federation's Annual Campaign.